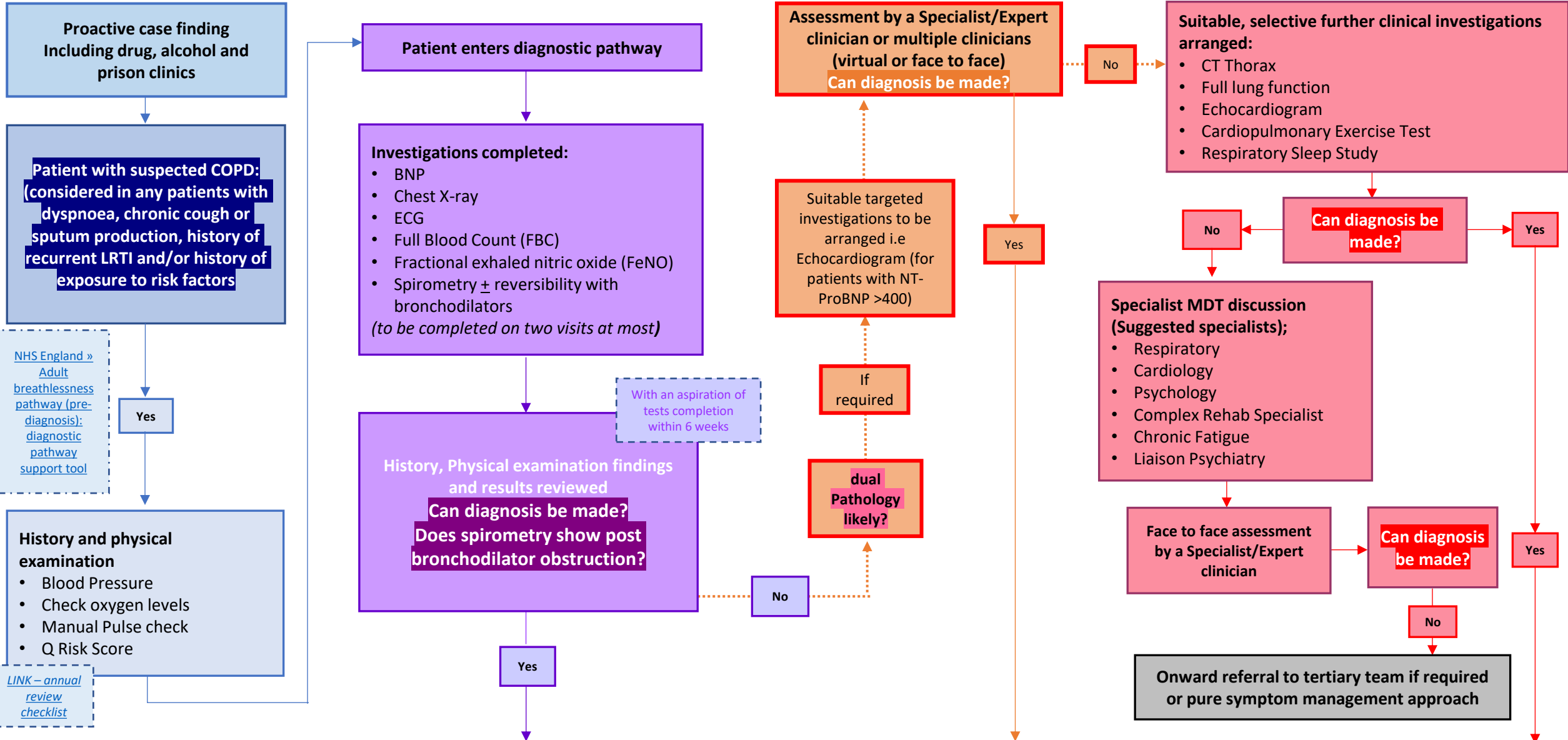


Cheshire & Merseyside Chronic Obstructive Pulmonary Disease (COPD) diagnostic pathway

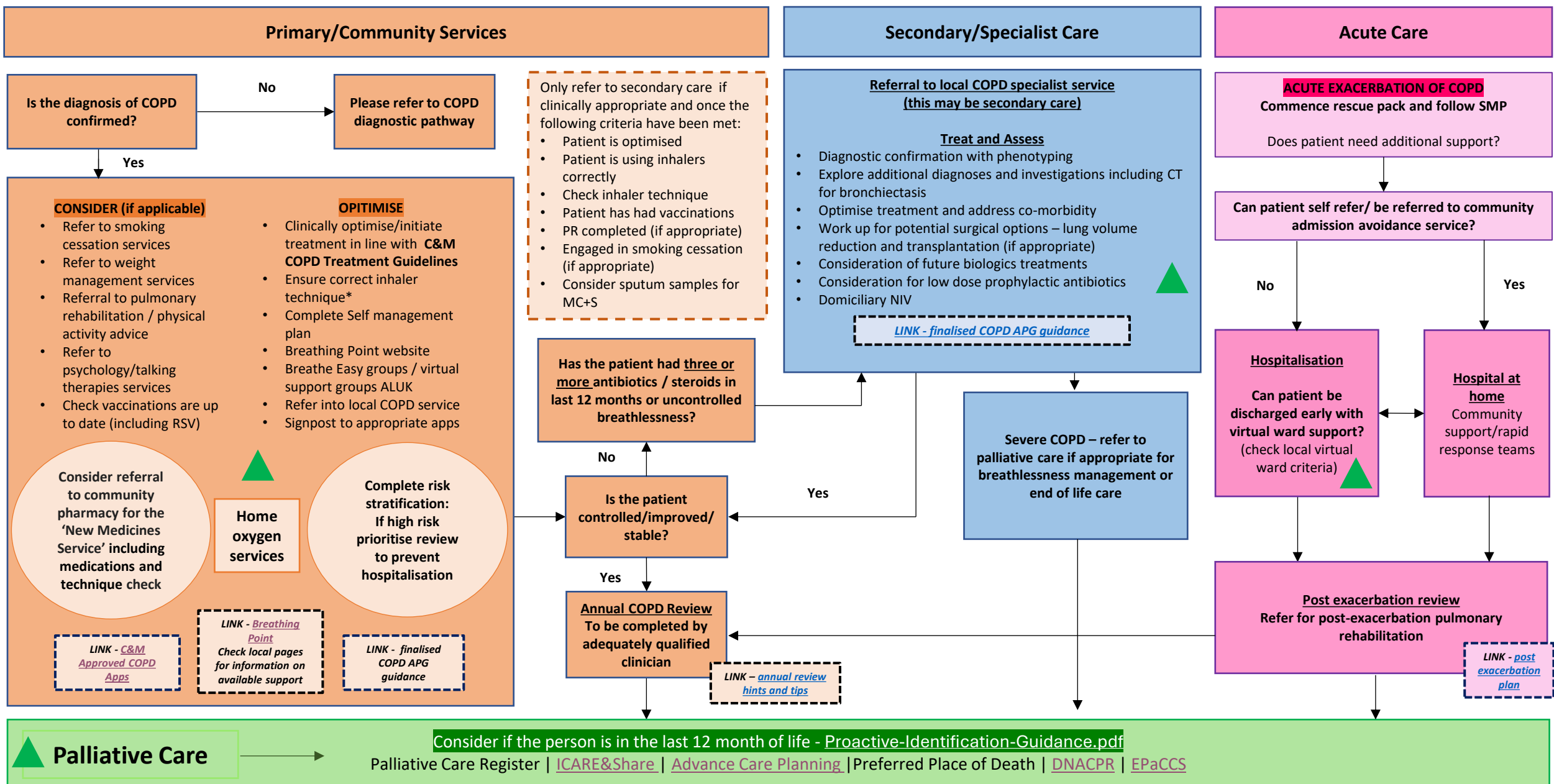


[NHS England » Adult breathlessness pathway \(pre-diagnosis\): diagnostic pathway support tool](#)

[LINK – annual review checklist](#)

With an aspiration of tests completion within 6 weeks

Cheshire & Merseyside Chronic Obstructive Pulmonary Disease (COPD) treatment pathway



Follow Palliative Care Guidance

Consider if the person is in the last 12 month of life

[Proactive-Identification-Guidance.pdf](#)

[NHS England — North West » North West Model for Life Limiting Conditions](#)

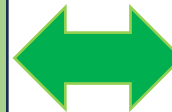


For Consideration



Palliative and End of Life Care Processes

- Palliative care register
- GSF coding
- Offer advance care planning discussion to put personalised care plan in place [NHS England — North West » Personalised Care Planning – Cheshire and Merseyside](#)
- Do not attempt cardiopulmonary resuscitation status
- Treatment escalation plan
- Symptom control plan (consider other co-morbidities & contributing clinical factors)
- Electronic Palliative Care Coordination Systems (EPaCCS)
- District nurse referral for assessment of care needs
- GP clinically required visits
- Notify out of hours of care plan



Symptom control plan

[NHS England — North West » Palliative Care Clinical Practice Summary for the North West Coast Clinical Network](#)

- Optimised inhaled & nebulised therapy
- Consider low dose opioid – refractory shortness of breath [NICE guidance](#)
- Consider low dose benzodiazepine – refractory anxiety [NICE guidance](#)
- Just in case medication subcutaneous &/or continuous subcutaneous infusion (CSCI)
- Referral to breathlessness management programme (if available)