



We are in the process of refreshing our five-year strategy for the Cheshire and Merseyside Health and Care Partnership.

A strategy is a plan. It sets out all the things we are going to do.

March 2020

SUN	MON	TUE	WED	THU	FRI	SAT
1	2	3	4	5	6	7
8	9	10	11	12	13	14
15	16	17	18	19	20	21
22	23	24	25	26	27	28
29	30	31				

Our first draft strategy was published in March 2023.



It includes our ten big ambitions which were the things that were important to us to work on.



It also shows that we are an equal partnership of NHS organisations, councils, hospices, Healthwatch and voluntary and community organisations.



The Health and Care Act 2022 said we had to have new arrangements. Part of this was to have an Integrated Care Partnership which we call our Partnership Board.



The Partnership Board is responsible for making sure the strategy is refreshed.

It will also make sure it meets the needs of the 2.7 million people that live across our area.



As part of our new arrangements our NHS Cheshire and Merseyside Integrated Care Board is responsible for developing a joint forward plan.

This will deliver the NHS part of the five year strategy.



Our nine local partnerships bring together integrated care board teams, local councils, voluntary and community organisations and providers.

We call these places partnerships.



They will lead most of the work making sure that the health and care needs of their areas are at the front and centre.

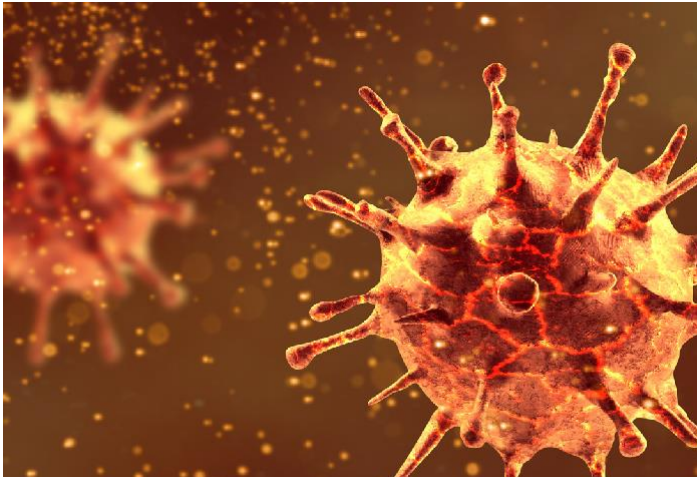
The nine local place partnerships





We know from the conversations we have already had that our big ambitions are still the right ones.

We know that we should focus more on how we work together to deliver them



We also know that the Covid pandemic has had a really big impact on peoples lives.



It has also led to many more people needing services which has added to problems with people having access to them.



We would like to hear what is important to you.

This will help us to develop a strategy and a joint forward plan.

We will be asking for people's views in the next few weeks.



The strategy and plan will make a difference to your health and wellbeing and how you receive care.

Find out more: www.cheshireandmerseyside.nhs.uk